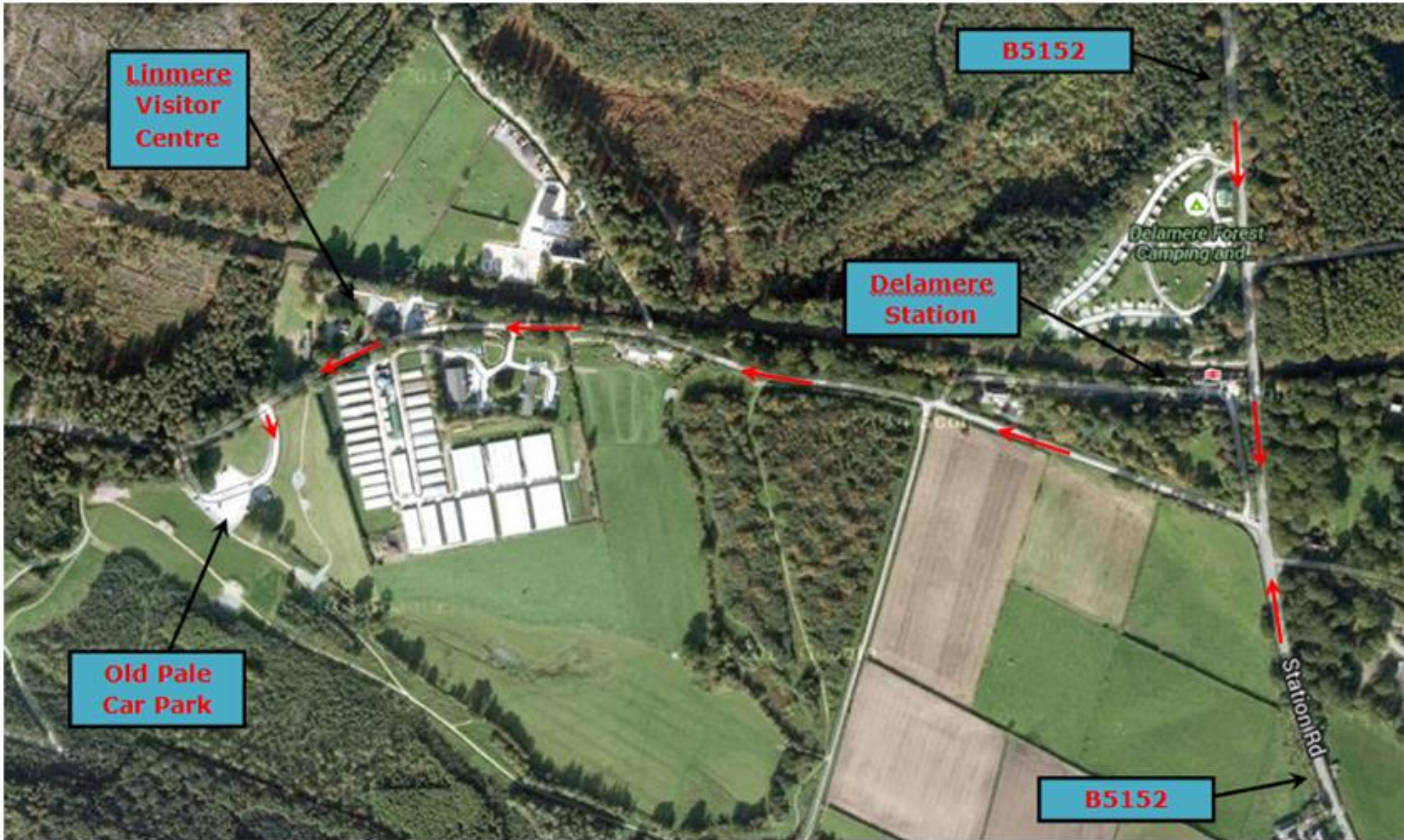


Linnere Visitor Centre
Delamere Forest
CW8 2JD



**Linmere
Visitor
Centre**

B5152

**Delamere
Station**

*Delamere Forest
Camping and*

**Old Pale
Car Park**

B5152

Station Rd

Although we are near Carparks, it's better to park along the road (in green) as we don't always have keys with us and they shut at 8pm

